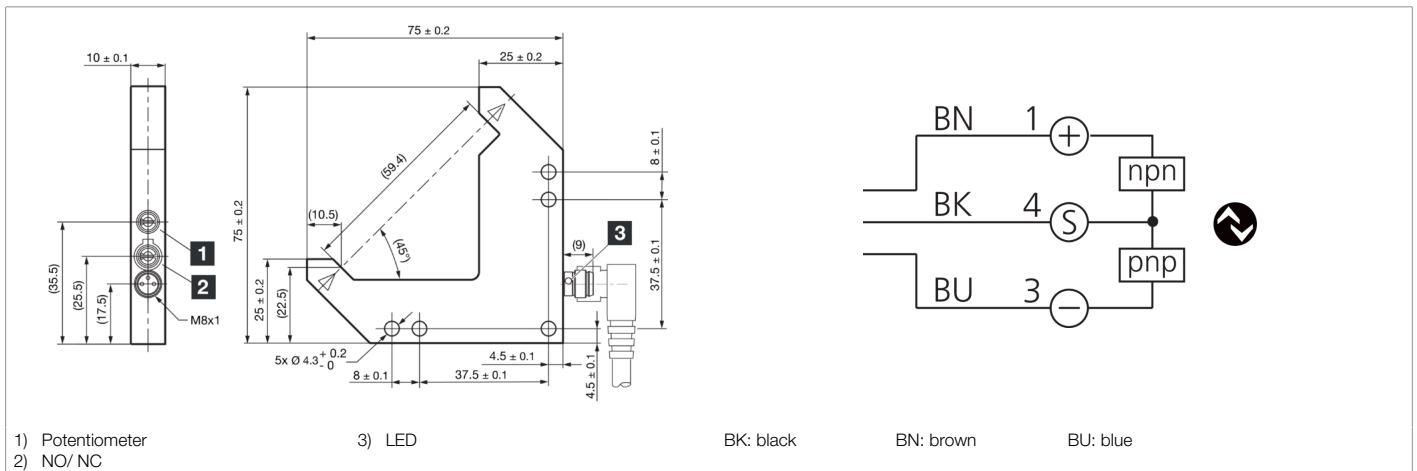
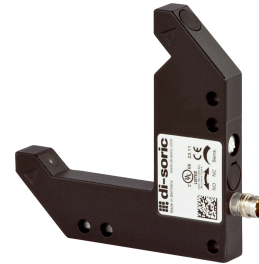




**212818**  
**OGLP 050 G3-T3**  
**High-performance angled light barriers**

- High function reserve
- Extremely dirt-resistant
- Collimator optics
- Optical axis approachable in x-, y- and z-direction
- Sensitivity is adjustable
- Light/dark switching



Function											

Technical data (typ.)	+20°C, 24 V DC
Service voltage	10 ... 30 V DC (Supply Class 2)
No-load current (max.)	30 mA
Insulation voltage endurance	500 V
Leg length internal	50/50 mm
Housing dimensions	75 x 75 x 10 mm
Housing length	75 mm
Housing height	75 mm
Housing width	10 mm
Housing material	Die-cast zinc (powder-coated)
Protection class	III, operation on protective low voltage
Approvals	UL
Operating principle	Optical
Evaluation	digital
Design	Angle
Characteristics	Mountable side by side
Switching output	Push-pull, 100 mA, NO/NC
Voltage drop (max.)	1 V
Interface	IO-Link
Light source	LED
Color	Infrared
Wavelength	860 nm
Modulation	Clocked



**212818**

**OGLP 050 G3-T3**

**High-performance angled light barriers**

Technical data (typ.)	+20°C, 24 V DC
Ambient light immunity	25 kLx
Range	60 mm (optical axis)
Resolution (factory setting)	2 mm (POWER)
Reproducibility (factory setting)	0.03 mm (POWER)
Resolution (STANDARD)	0.3 mm
Reproducibility (STANDARD)	0.02 mm
Resolution (HIGH RESOLUTION)	0.2 mm
Reproducibility (HIGH RESOLUTION)	0.02 mm
Resolution (POWER)	2 mm
Reproducibility (POWER)	0.03 mm
Resolution (SPEED)	0.3 mm
Reproducibility (SPEED)	0.02 mm
Sensitivity adjustment	Potentiometer
Switching frequency (factory setting)	200 Hz (POWER)
Switching frequency (STANDARD)	5000 Hz
Switching frequency (HIGH RESOLUTION)	1500 Hz
Switching frequency (POWER)	200 Hz
Switching frequency (SPEED)	8000 Hz
Ambient temperature during operation	-25 ... +60 °C
Protection type	IP 67
Connection	Connector, M8, 3-pin
Connection cable	TK ...
More information / accessories	<a href="https://www.di-soric.com/212818">https://www.di-soric.com/212818</a>