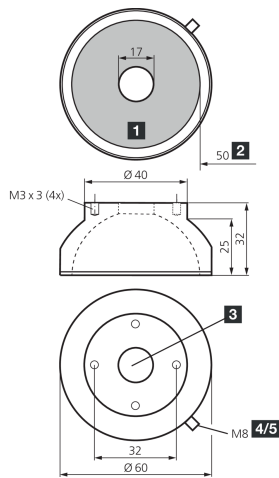
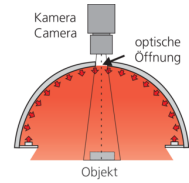
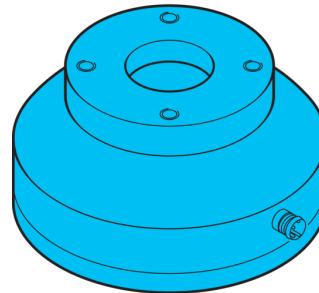




**209927**  
**BE-DOME60/50-RGB-T4**  
**Dome light**

- RGB light with separately controllable colors
- Extremely homogeneous, diffuse illumination
- Very compact design
- High light intensity
- Robust design



PIN	Aderfarbe wire color	Funktion function
4	schwarz / black	- rot / red
2	weiß / white	- grün / green
3	blau / blue	- blau / blue
1	braun / brown	+ 24V

- 1) Sensing surface  
2) Free internal diameter  
3) Optical opening

- 4) Connector  
5) 4-pin

BK: black

BN: brown

BU: blue

WH: white

**Function**

--	--	--	--	--	--	--	--	--	--	--

**Technical data (typ.)**

**+20°C, 24 V DC**

Service voltage	24 V DC
Power	1.2 W (24 V DC)
Power consumption	150 mA (3 colors, $\sum < 3.6$ W)
Illuminated area	Ø 50 mm
Quantity	20 (LEDs)
Diameter	Ø 60 mm (Diameter)
Housing material	Aluminum / Plastic
Protection class	III, operation on protective low voltage
Risk group (DIN EN 62471)	Free group
Light source	LED
Color	RGB
Wavelength	630, 530, 470 nm
Deflection angle FWHM	120°
Ambient temperature during operation	0 ... +50 °C
Connection	Connector, M8, 4-pin

**More information / accessories**

<https://www.di-soric.com/209927>