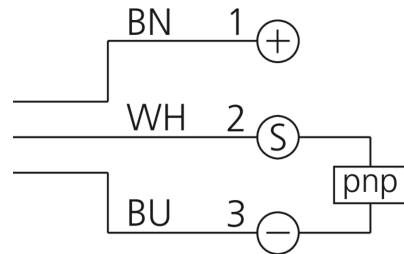
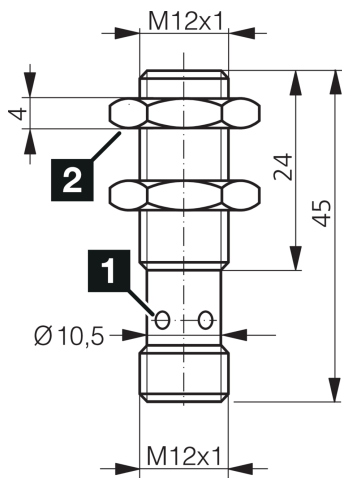
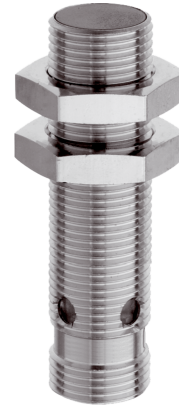




206656
DCCK 12 M 04B POK-IBSL
Inductive proximity sensor

- Metal connector
- Integrated amplifier
- Short-circuit protection
- Starting pulse suppression
- LED



1) LED 4 x 90° (yellow)

2) Width over flats 17 mm

BN: brown

BU: blue

WH: white

Function



Technical data (typ.)

+20°C, 24 V DC

| | |
|--------------------------------------|--|
| Service voltage | 10 ... 30 V DC |
| Internal power consumption | < 10 mA |
| Insulation voltage endurance | 500 V |
| Installation type | Flush |
| Thread | M12 x 1 |
| Housing length | 45 mm |
| Housing material | Brass (nickel-plated) |
| Protection class | III, operation on protective low voltage |
| Operating principle | inductive |
| Evaluation | digital |
| Design | Thread |
| Characteristics | increased operating distance |
| Product series | INE Extended |
| Switching output | pnp, 200 mA, NC |
| Voltage drop (max.) | 2.4 V |
| Switching distance (SN) | 4 mm |
| Standardized measuring plate | 12 x 12 x 1 mm |
| Switching hysteresis (max.) | < 15 % |
| Switching frequency | 800 Hz |
| Ambient temperature during operation | -25 ... +70 °C |



206656

DCCK 12 M 04B POK-IBSL

Inductive proximity sensor

Technical data (typ.)

+20°C, 24 V DC

Protection type

IP 67

Connection

Connector, M12, 4-pin, A-coded

Connection cable

VK ...

More information / accessories

<https://www.di-soric.com/206656>