

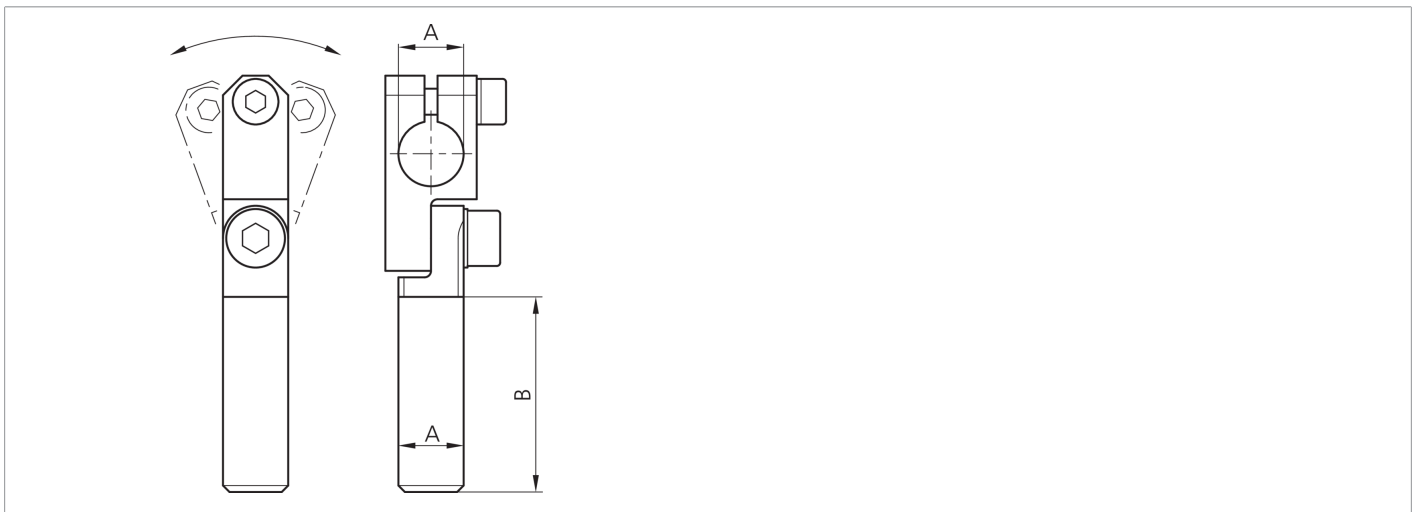
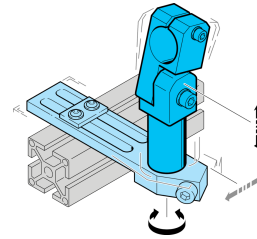


203909

SH-GLA-20-20-150

Articulated arm

- Highly flexible versatile mounting system
- Universal mounting
- Stepless adjustment
- Robust design



Technical data (typ.)

		+20°C
Diameter		A: 20 mm
Dimension		B: 150 mm
Housing material		Metal
Component		Articulated arm
Characteristics		Adjustable
To be used for		Clamping pin 20 mm
Product series		Z-UBT-KL-MS Assembly system

More information / accessories

<https://www.di-soric.com/203909>