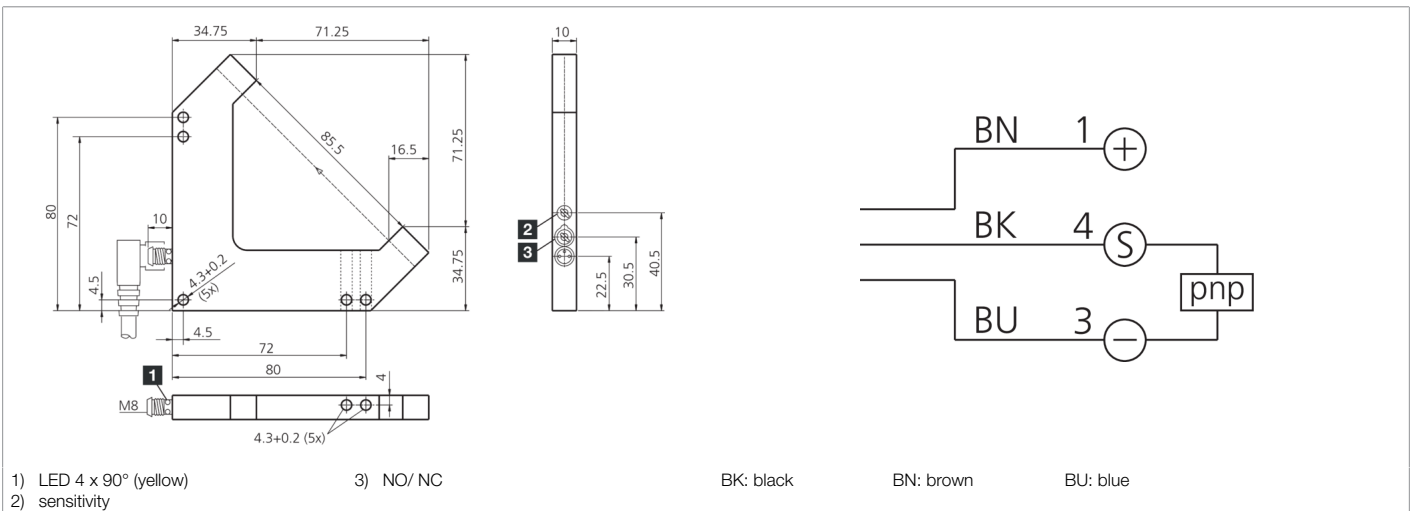
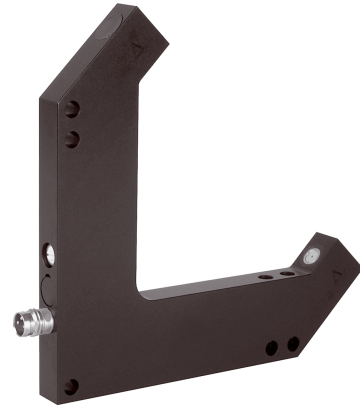


**200976**  
**LGL 081 P3K-TSSL**  
**Laser angled light barrier**

- Very high resolution
- Mountable side by side
- Optical axis approachable in x-, y- and z-direction
- Visible laser spot
- High switching frequency
- Light/dark switching
- Laser class 1
- Bright ring LED



Function											

Technical data (typ.)	+20°C, 24 V DC
Service voltage	10 ... 35 V DC (Supply Class 2)
No-load current (max.)	30 mA
Insulation voltage endurance	250 V
Leg length internal	80/80 mm
Housing dimensions	106 x 106 x 10 mm
Housing length	106 mm
Housing height	106 mm
Housing width	10 mm
Housing material	Aluminum (Black, Anodized)
Protection class	III, operation on protective low voltage
Approvals	UL
Operating principle	Optical
Evaluation	digital
Design	Angle
Switching output	pnp, 200 mA, NO/NC, switchable
Voltage drop (max.)	2.8 V
Light source	Laser
Laser class	CLASS 1 LASER PRODUCT, 1 (IEC 60825-1:2014 / EN 60825-1:2014)
Color	Red
Wavelength	650 nm
Modulation	Clocked

**200976****LGL 081 P3K-TSSL****Laser angled light barrier**

<b>Technical data (typ.)</b>	<b>+20°C, 24 V DC</b>
Laser power	< 100 µW
Ambient light immunity	100 kLx
Range	85 mm (optical axis)
Resolution	Ø 0.05 mm
Switching hysteresis (max.)	20 µm
Reproducibility	10 µm
Sensitivity adjustment	Potentiometer
Switching frequency	3000 Hz
Ambient temperature during operation	+5 ... +45 °C
Protection type	IP 67
Connection	Connector, M8, 3-pin
Connection cable	TK ...
<b>More information / accessories</b>	<b><a href="https://www.di-soric.com/200976">https://www.di-soric.com/200976</a></b>